



**HERITAGE
FOUNDATION**
WILLIAMSON COUNTY, TN

DOWNTOWN
FRANKLIN
ASSOCIATION

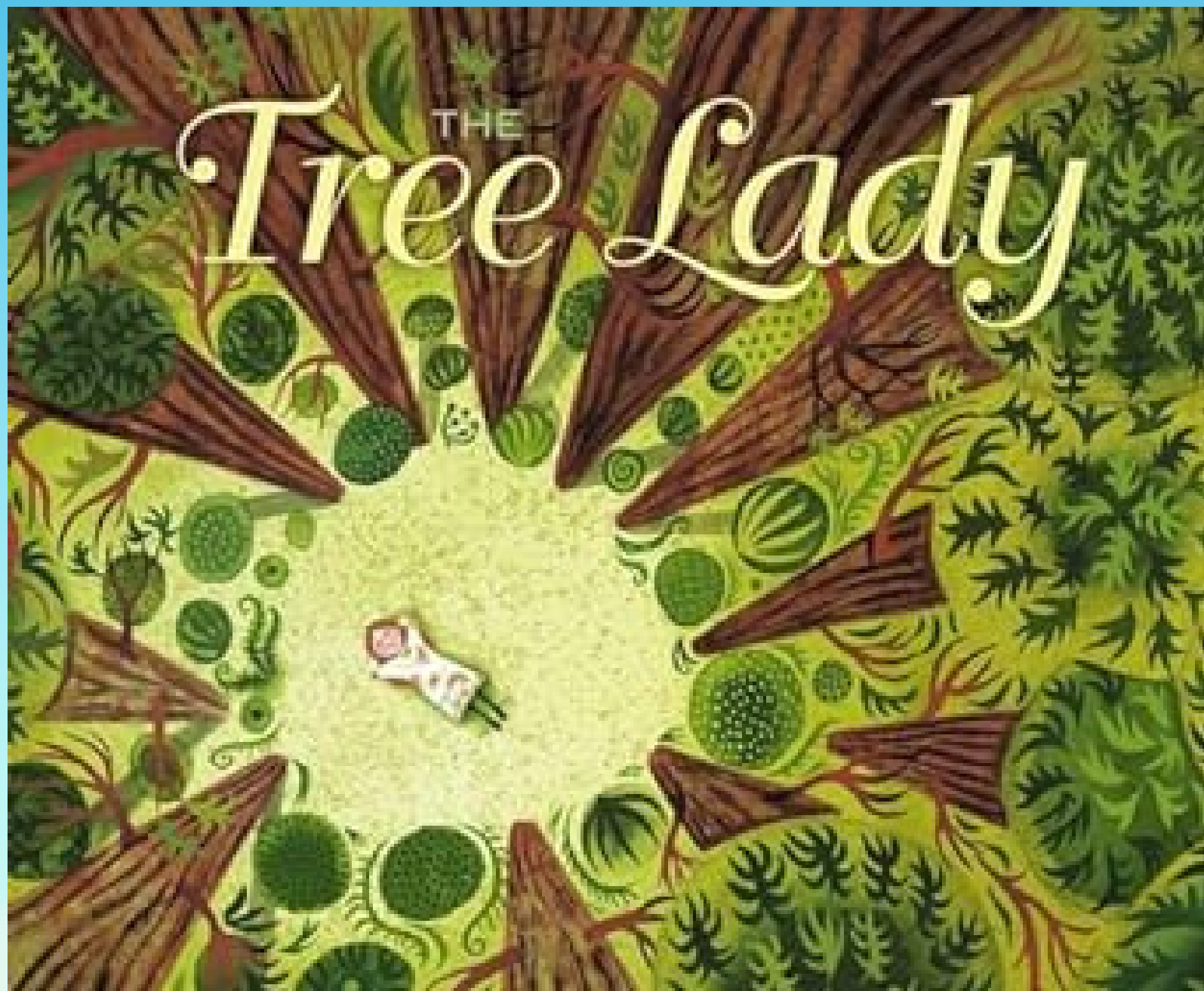
The
FRANKLIN
THEATRE

FRANKLIN
Croove
ESTATE & GARDENS

The Moore-Morris
History and
Culture Center
WILLIAMSON COUNTY, TN

READ ALOUDS

PRESERVING OUR COMMUNITY



Read Aloud Video

Interactive Questions

Post-Read Activity

THE *Click* Lady

Click here!

to listen to the story



Do you like to play outside in nature like Kate?

Have you ever made things from loose twigs, leaves or plants?

Are you familiar with the “needles” from the trees? Are they the same needles you see at the Doctor’s office?



What is your favorite subject in school?

How do you think science and a love of nature go together?

What are some adjectives you would use to describe Kate at this point in the story?



Did you notice how the author gives the trees human like characteristics?

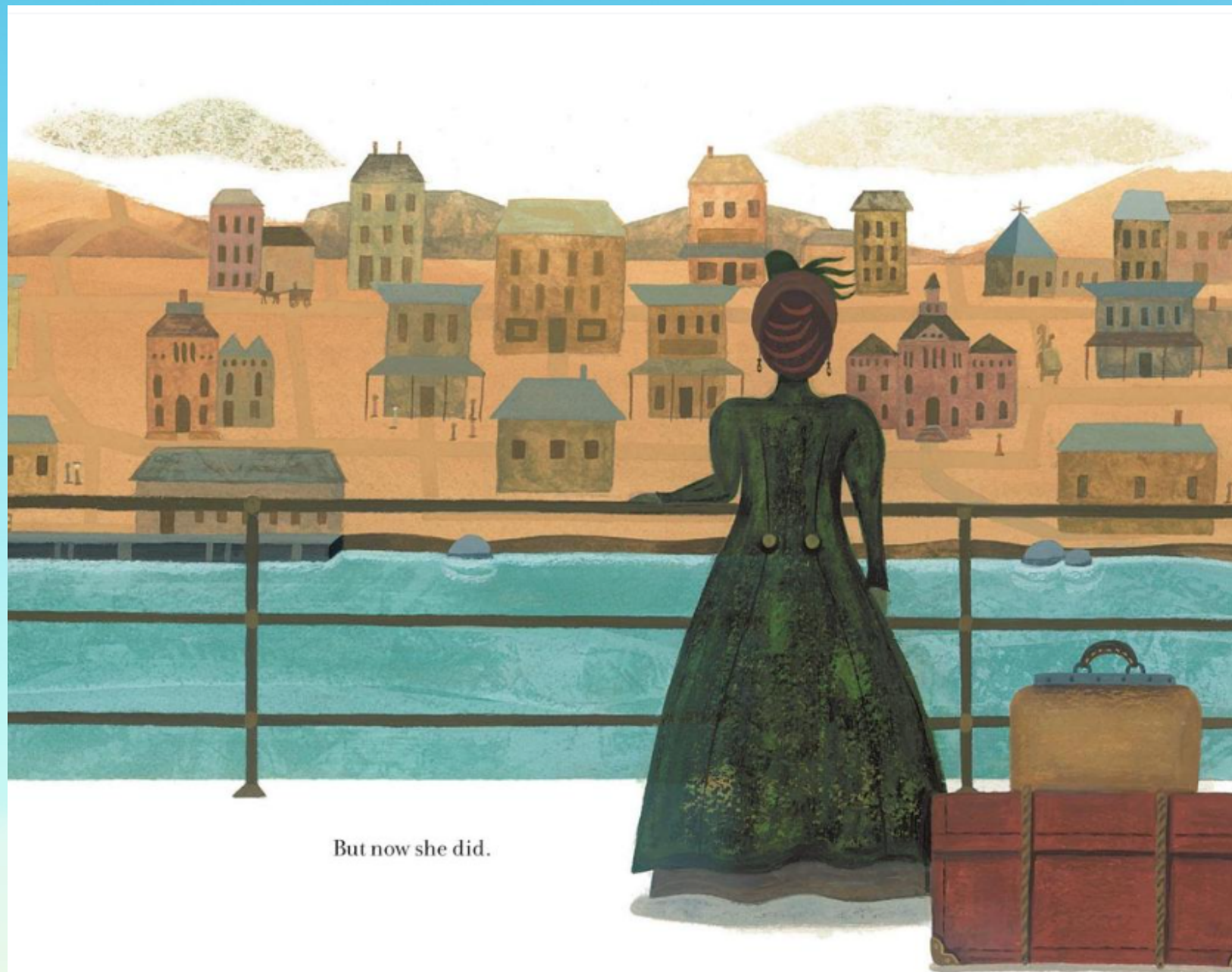
What are some examples?

Why do you think the author does this?



Kate made history by following her passion.

Are there things that interest you or you find exciting that might be different than your friends?



How did the desert land of San Diego fit Kate's love of green space and trees?

What do you know about the desert climate?

How is it different than the climate of Tennessee?



Does it surprise you that Kate grew up to be a teacher?

Why or why not?

What kind of teacher do you think Kate was?



Is Kate the kind of person who gives up easily?

What do you think she is pondering when she looks at the park in the window?

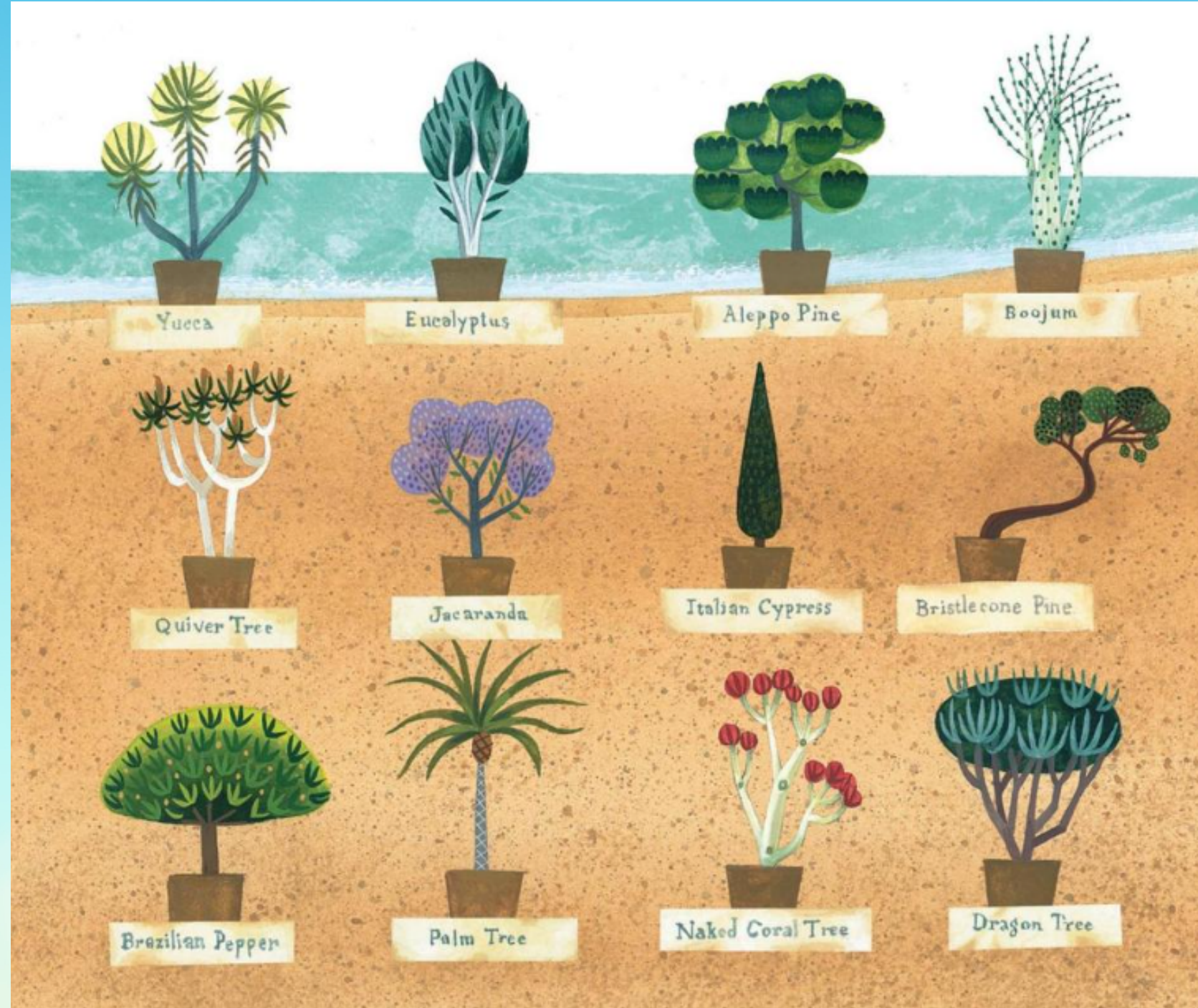
Kate is a “problem-solver.” What do you think that means?



Kate was determined to find a solution.

Have you ever researched something that you were curious about?

What does it mean to research a topic or solution? What are different ways you can research?



Kate did not rely only on her own knowledge but reached out to friends and other passionate people for help.

How can building a team and asking for help be powerful?



Are you surprised by the impact of Kate's passion?

This true story shows us the power that one person can make.

Do you have any dreams that you feel might be "too big"?



A new and even bigger opportunity came for Kate!

This one had a due date and a big vision. Can she do it?



This shows us the importance of volunteer work. We might not always be the “leader” but we can be a strong and powerful volunteer.

Have you ever volunteered?

What areas would you like to volunteer in?



Have you ever heard of a “domino effect”?

Think about what happens when you set up a train of dominoes and knock one down. What happens to the rest?

This is the same thing that happened to Kate’s legacy. Once she started the movement, it touched countless people.



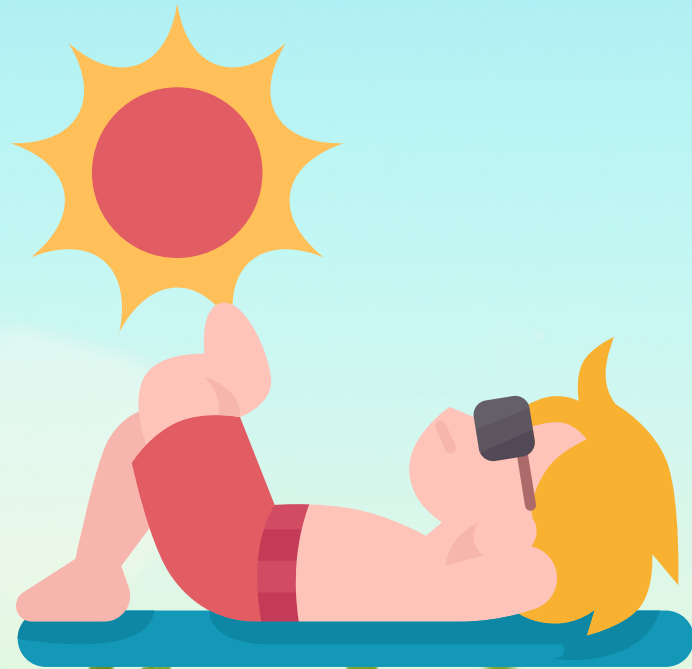
Do you think Kate would be proud of the legacy she built?

Have you visited San Diego in California?

When you visit, you will have to take note of the greenery, plants, and trees you see!

It only takes one person with a passion to make a HUGE difference.

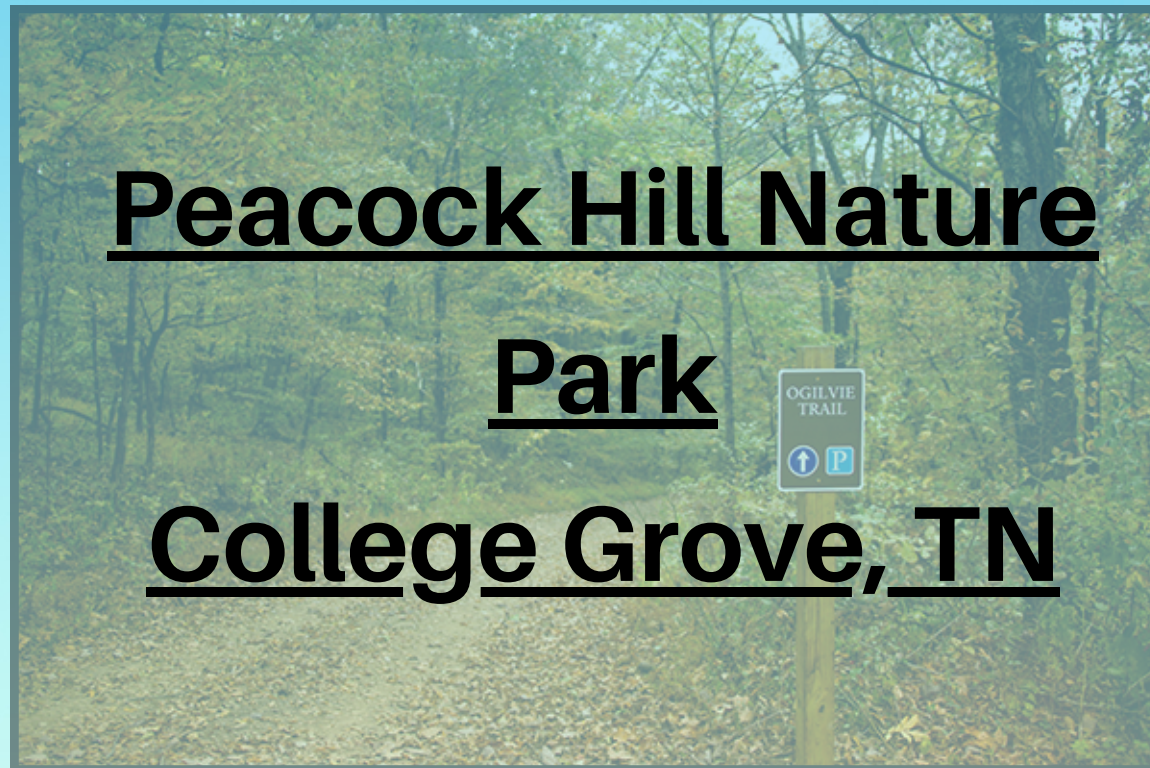
HOW TO ENJOY GREEN SPACE



ADVENTURE WALK "I SPY" LIST

- a loose twig
- 3 different types of leaves
- a tiny rock
- a big rock
- an insect
- a bird
- a beautiful flower
- tree bark
- hole in a tree
- mud
- sand
- animal track
- pinecone
- something that make noise
- a feather
- a bird's nest
- a berry or seed
- something heavy
- something rough
- something smooth
- a squirrel
- something you think is beautiful

NATURE PARKS



PARKS IN FRANKLIN, TN

- Aspen Grove Park
- Bicentennial Park
- Carter's Hill Park
- Dry Branch Storm Water Basin
- Eastern Flank Battlefield Park
- Fieldstone Park
- Fort Granger Park
- The Park at Harlinsdale
- Jim Warren Park
- Liberty Park
- Pinkerton Park
- Winstead Field Park

PARKS IN BRENTWOOD, TN

- Concord Park
- Crockett Park
- Deerwood Abortorium
- Flagpole Park
- Granny White Park
- Smith Park
- Maryland Way Park
- Owl Creek Park
- Powell Park
- River Park
- Tower Park
- Wikle Park

OTHER PARKS IN WILCO

- Nolensville Park (Nolensville, TN)
- Veteran's Memorial Park (Fairview, TN)
- Preservation Park (Thompson's Station, TN)
- Sarah Benson Park (Thompson's Station, TN)
- Nutro Dog Park (Thompson's Station, TN)