



# HERITAGE FOUNDATION

WILLIAMSON COUNTY, TN

## Celebrating Preservation Month

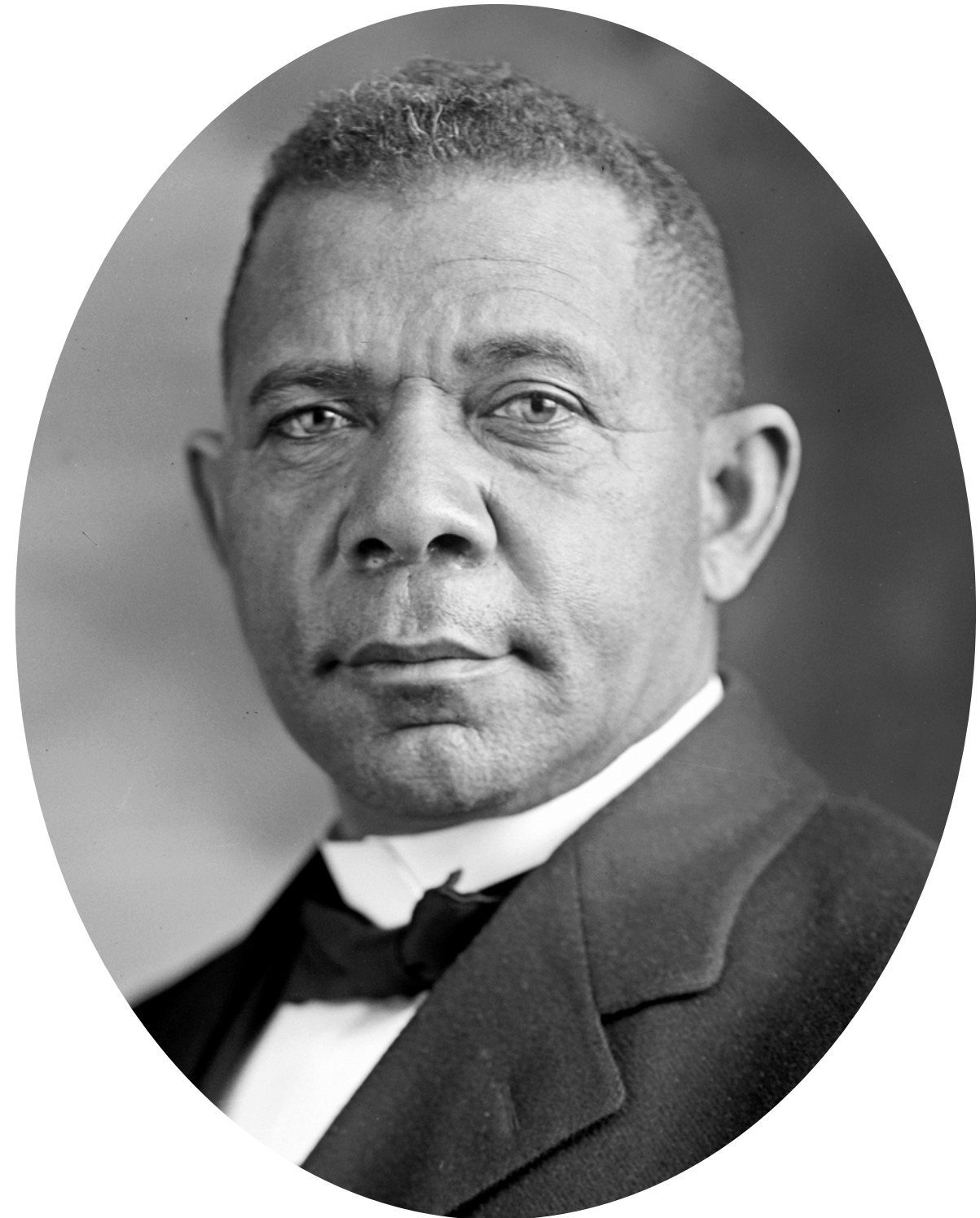
SSP.05 Develop historical awareness by:

- Recognizing how and why historical accounts change over time
- Recognizing how past events and issues might have been experienced by the people of that time, with historical context and empathy rather than present mindedness
- Identifying patterns of continuity and change over time, making connections to the present



Julius Rosenwald

Image courtesy of Encyclopedia Britannica Inc



Booker T. Washington

Image courtesy of Getty Images



Julius Rosenwald and Booker T. Washington walk the campus of Tuskegee Institute in February 1915.

Tuskegee  
Institute  
circa 1910's-1920's



Image courtesy of Tuskegee University



Image courtesy of Tuskegee University

Tuskegee  
University  
2024

**1927 EDITION OF**  
**The SEARS, ROEBUCK Catalogue**

**BUY FROM THE WORLD'S LARGEST STORE**

**The Roaring Twenties**  
 edited by ALAN MIRKEN

**SUPERTONE GUITARS**

*Instruction Book and Chart Included with These Guitars*

*Music Self Played is Happiness Self Made*

**Combination Guitar Outfit**

*Can be Played in Regular or Hawaiian Style*

*Instruction Book and Chart Included with These Guitars*

**Mahogany Finish**  
 Invitation mahogany body. White birch top. Mahogany finish neck. Ebony fretboard with celluloid position dots. The top edge and soundhole are bound with black celluloid. Guard plate of decorative inlaid inlaid. Neck consists of three pieces. Patent heads with steel plates and brass gears. Nickel plated tailpiece. Standard size. Shipping wt. 14 lbs.  
 12K231G.....\$4.79  
 12K232G.....Same as above, but in three-quarter size.....\$4.79

**Birchwood Brown Finish**  
 Figured birchwood back and sides. Finished in a brownish color. Natural birch top with decorative stripes around soundhole. Hardwood fretboard inlaid with three position dots. Screw patent heads with brass gears and steel plates. Nickel plated tailpiece. Standard size. A well made guitar. Good finish, workmanship and tone. Shipping weight, 14 pounds.  
 12K233G.....\$3.95

**Genuine Mahogany Beautifully Figured**  
 Back and sides of selected genuine mahogany. Spruce top and mahogany neck. Head veneered and inlaid with pearl ornament. Ebony fretboard inlaid with pearl ornaments and bound with white celluloid. Rose wood and white wood inlay artistically arranged. Ebony bridge and bridge pins. Nickel plated patent heads. Standard size. Shipping wt. 14 lbs.  
 12K247G.....\$14.95

**Our Finest A Beauty**  
 Body of beautifully figured ten wood with top of selected spruce. Mahogany neck with veneered head inlaid with pearl. Ebony fretboard bound with tortoise shell celluloid and inlaid with pearl. Done out. The edge of the top is inlaid with pearl and bound with celluloid imitation of tortoise shell. Soundhole inlaid and bound in tortoise shell. Rosewood and holly veneer inlaid down the middle of the back. Flavored bridge with brass and tortoise shell. Nickel plated patent heads. Shipping wt. 15 pounds.  
 12K276G.....\$19.75  
 12K277G.....Gibbs Limited size.....\$22.45

**Exceptional Tone Quality**  
 Gutter made of genuine figured mahogany. Top and back edges are inlaid with black and white pearl. Neck and head with alternating black and white celluloid inlays. In a corded effect which gives the instrument a very striking appearance.  
 12K240G.....\$9.95  
 12K241G.....Guitar case, shipping wt. 14 pounds.....\$7.95

**Music Self Played is Happiness Self Made**

**HAWAIIAN GUITARS**

The Hawaiian instrument called the steel guitar, with its beautiful shimmering and sharp staccato tones, has done much to make the Hawaiian music so extremely popular. Owing to the fact that the strings vibrate when held, it is comparatively easy to learn to play this instrument. Steel bar, picks and instruction book as illustrated, included with 12K481G, 12K482G and 12K483G.

**Genuine Mahogany**  
 Back and sides of selected genuine mahogany. Spruce top, mahogany neck and head. Ebony fretboard inlaid with three position dots. Fancy colored wood mosaic design on sides and top. Ebony finish fretboard with white celluloid position dots. Edge of top, back and soundhole bound with black and white celluloid in corded effect. Patent heads with composition buttons. Articles shown above at right, included. Shipping weight, 14 pounds.  
 12K480G.....\$14.25  
 12K481G.....\$7.25

**Selected Birchwood**  
 Top, sides and back of figured birch. Ebony finish fretboard inlaid with white celluloid position dots. Edges of top and soundhole bound with white celluloid. Ebony finish bridge with metal fret. Nickel plated tailpiece. Patent heads with composition buttons. Body, including top and neck, is finished in brownish color, slightly shaded at center of top and back. A well made instrument at a low price. Articles (books, picks, etc.), shown above at left, included. Shipping wt. 14 lbs.  
 12K482G.....\$4.95

**Its Easy to Order From the World's Largest Store. See Page 546**

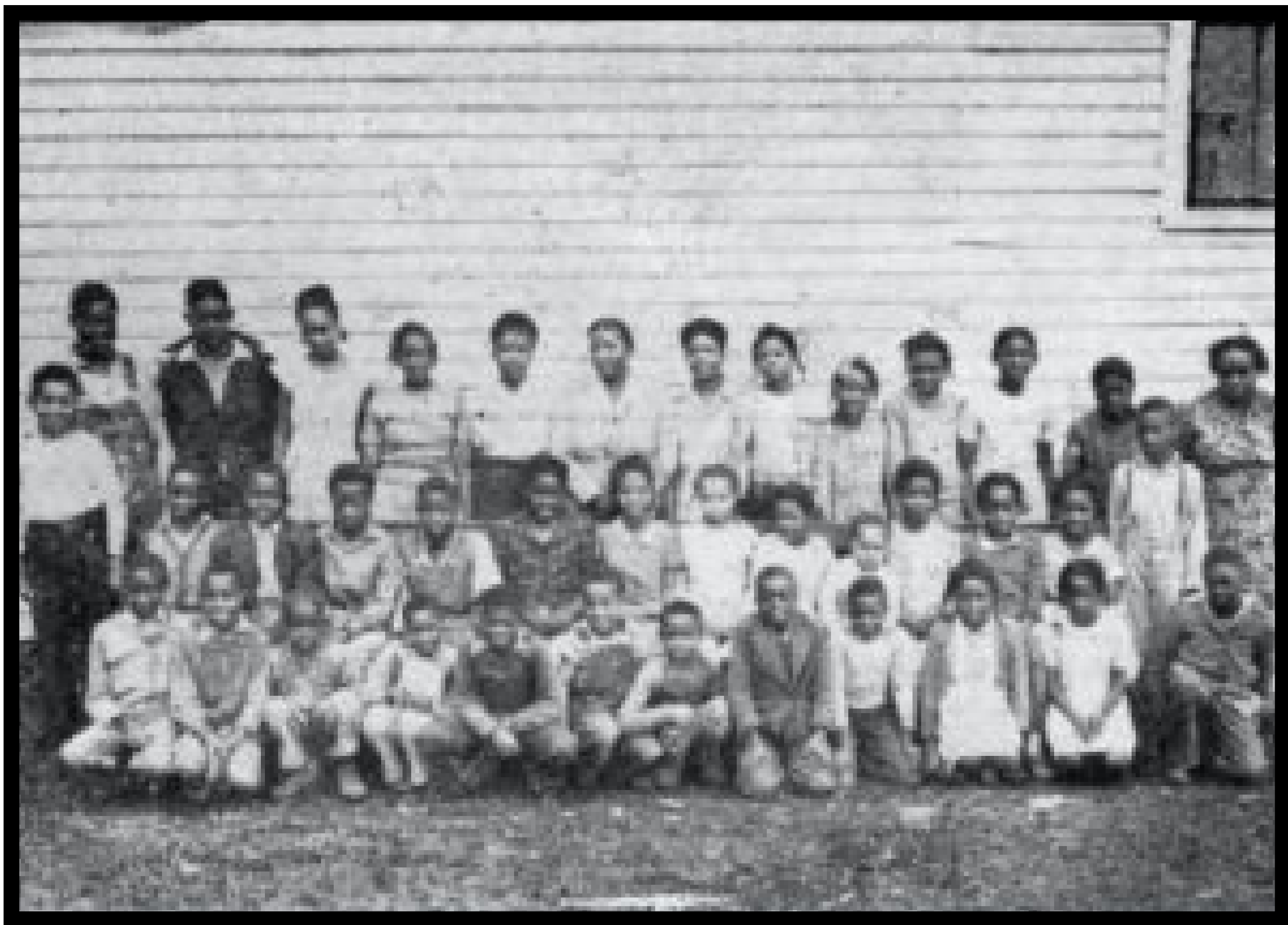
675

Image courtesy of the Birthplace of Country Music Museum Collection



Lee-Buckner Rosenwald School in 1927.

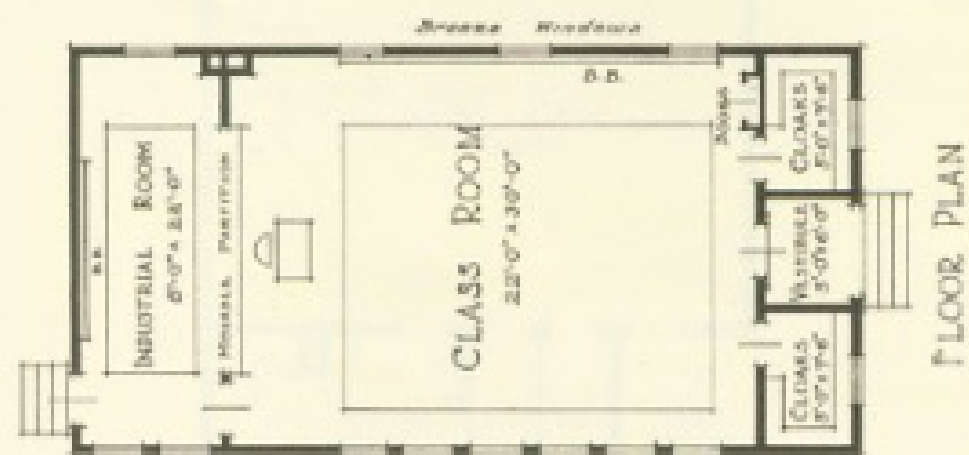
Photo from the Fisk University Rosenwald database.



School children and teacher at Lee-Buckner Rosenwald School before 1948.

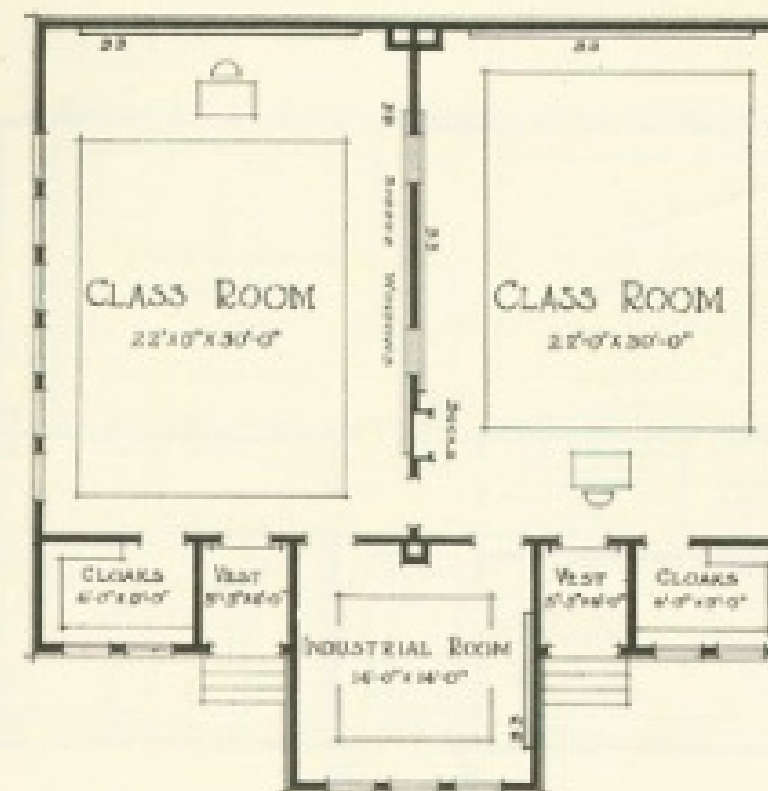
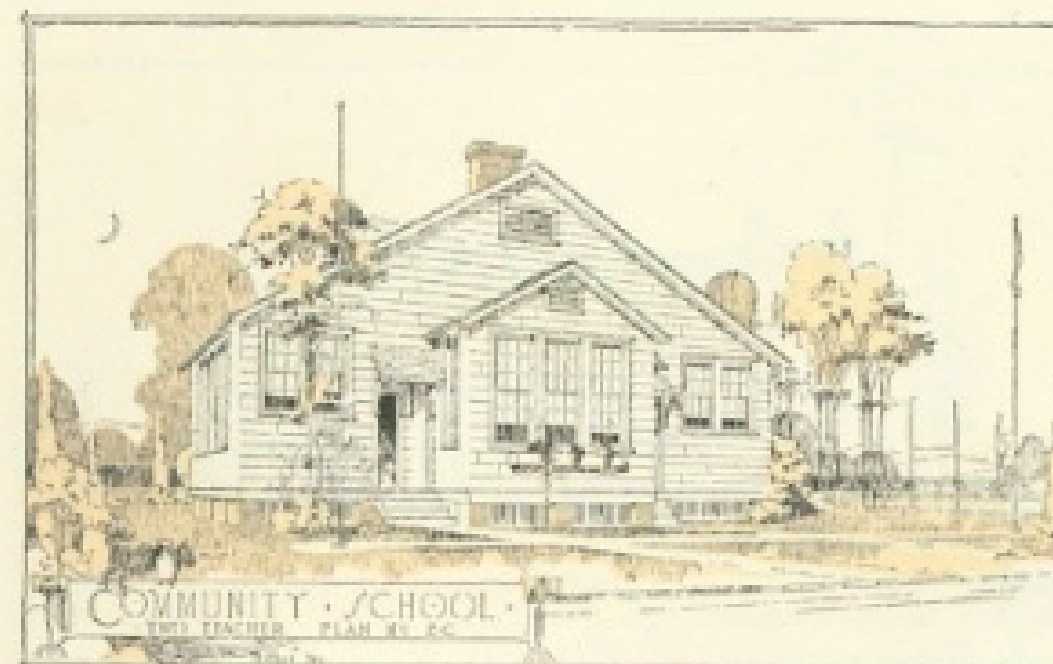
Image courtesy of Ms. Georgia Harris and used with permission by Heritage Foundation.

COMMUNITY SCHOOL PLANS



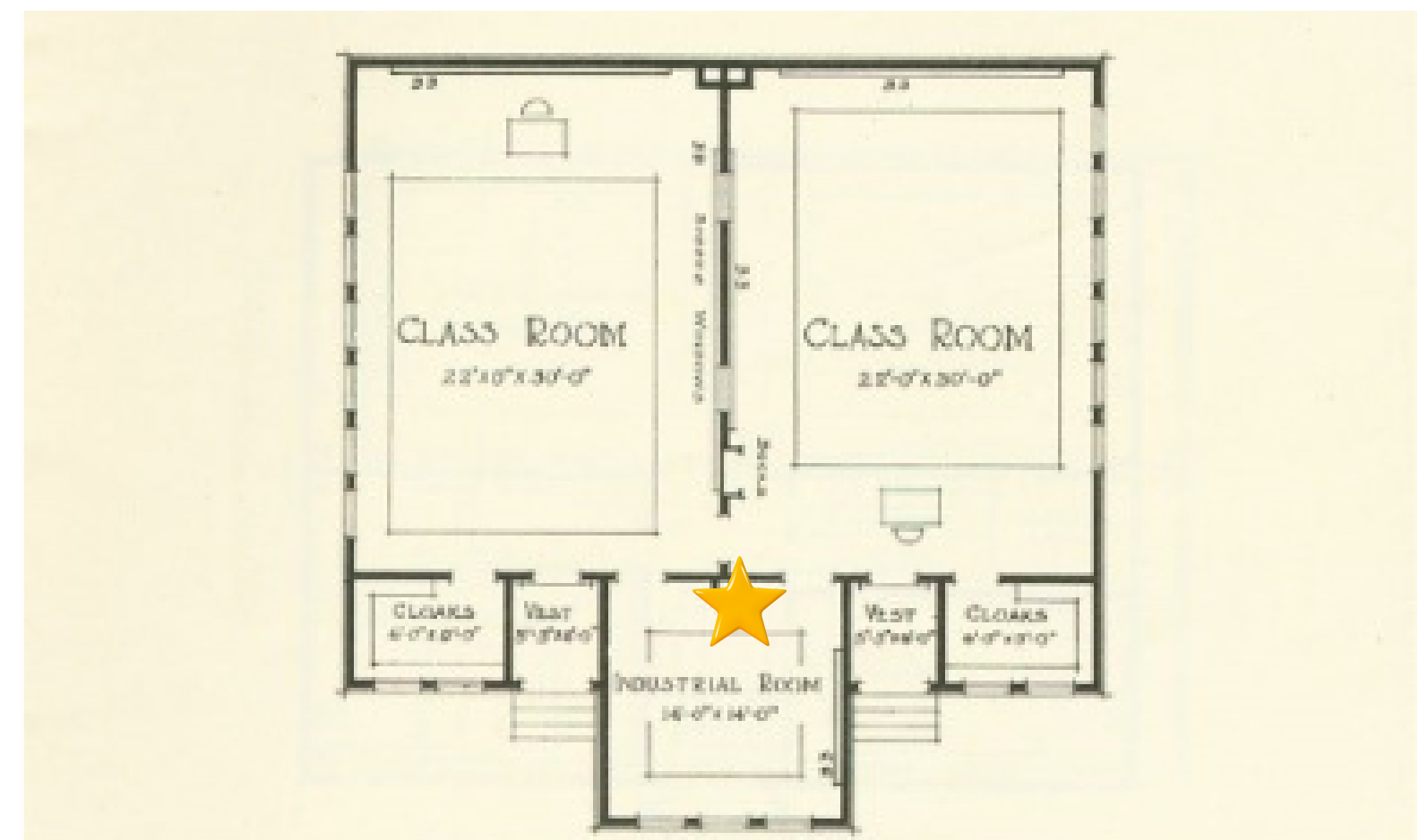
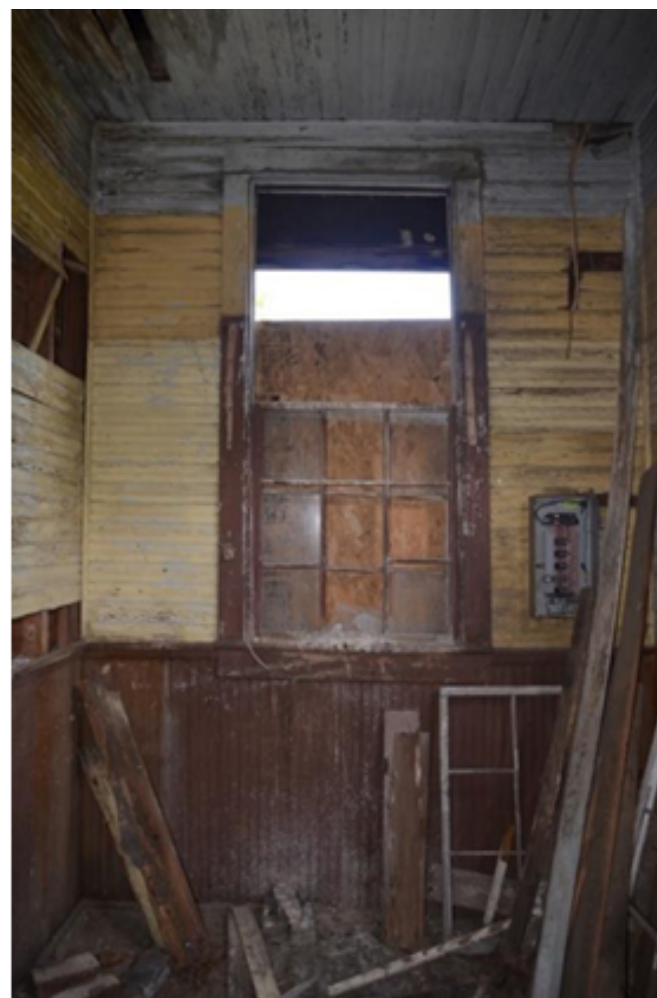
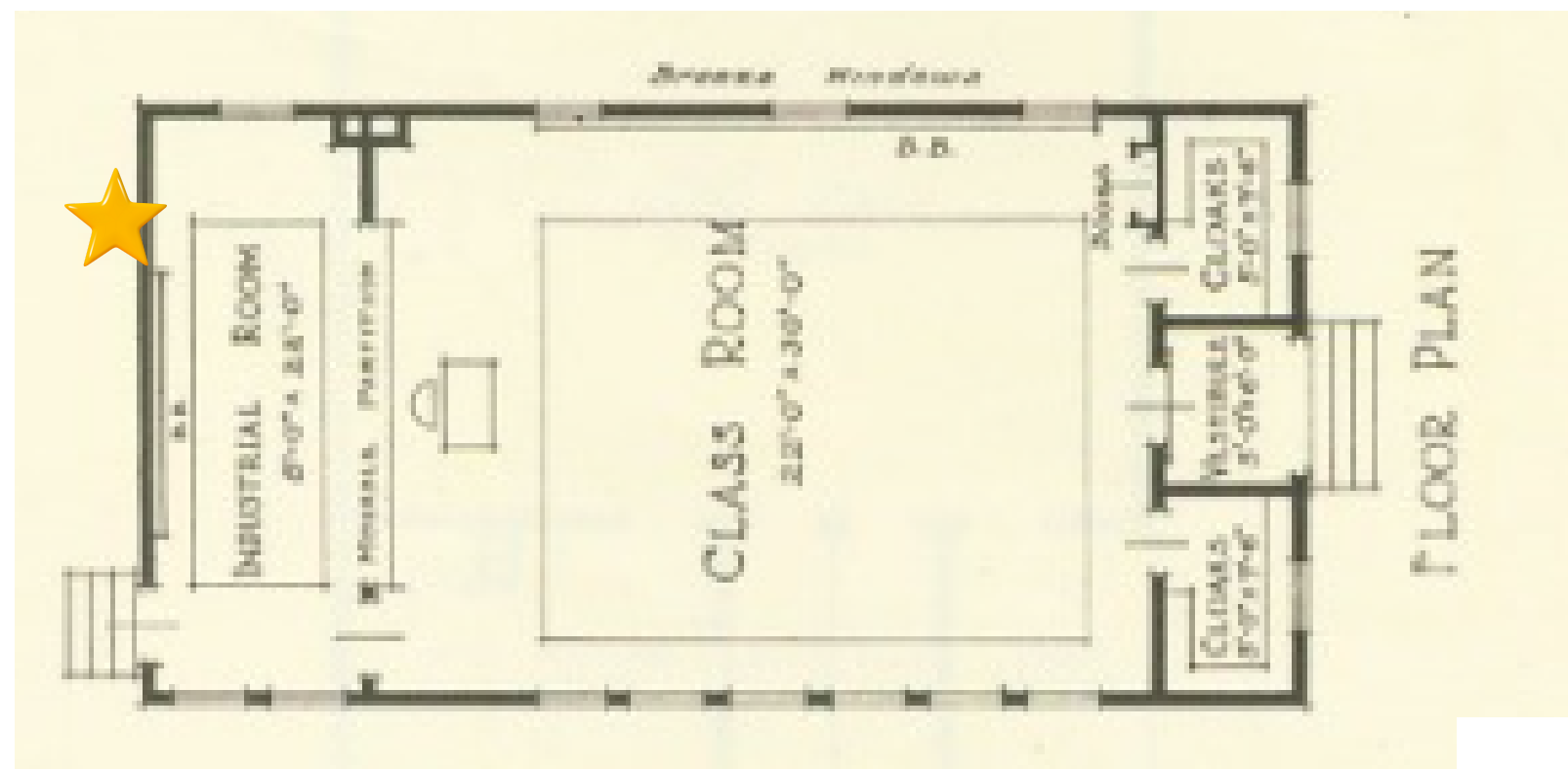
ONE-TEACHER  
COMMUNITY SCHOOL PLAN NO. 1-A  
TO FACE NORTH OR SOUTH ONLY

COMMUNITY SCHOOL PLANS



FLOOR PLAN NO. 2-C  
TWO TEACHER COMMUNITY SCHOOL  
TO FACE NORTH OR SOUTH ONLY

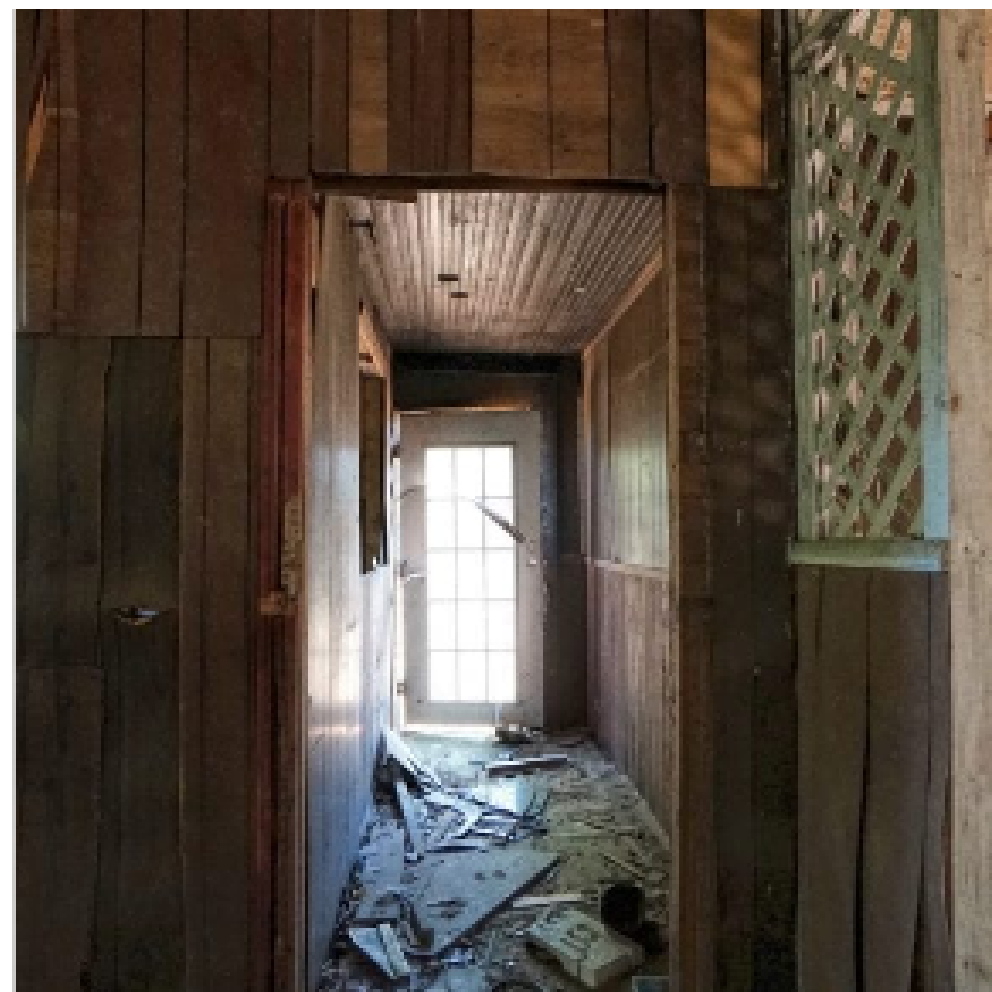




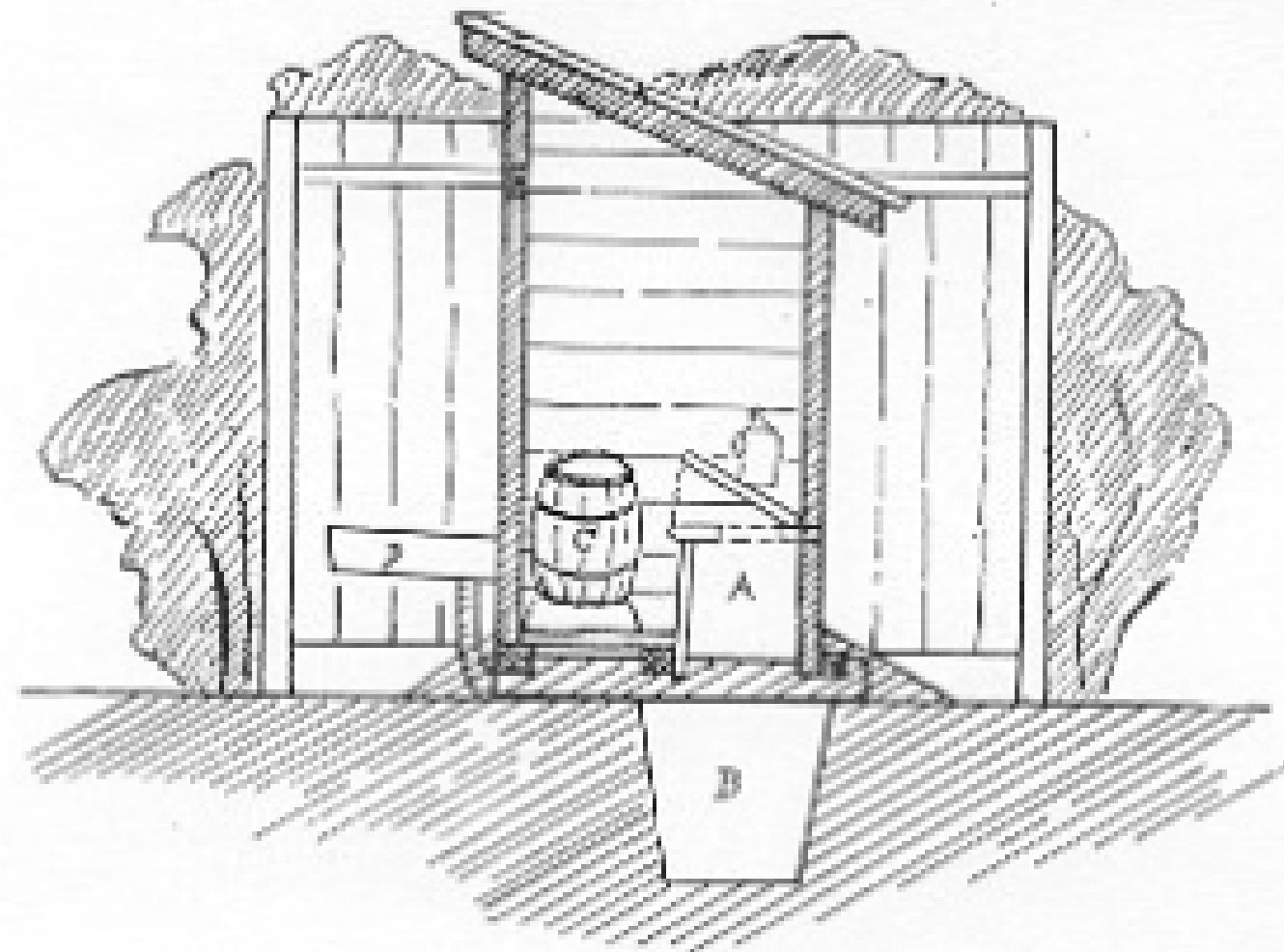
The Industrial Room would have been used for shop and cooking classes.



Lee-Buckner in Springhill, TN in 2024.







SANITARY TOILET USING PIT SYSTEM





Alumni of Lee-Buckner standing in front of their school in 2024 prior to it's move.





Photo on the inside of of a Rosenwald School in the 1930's Cairo, TN

Image courtesy of the TN State Library and Archives

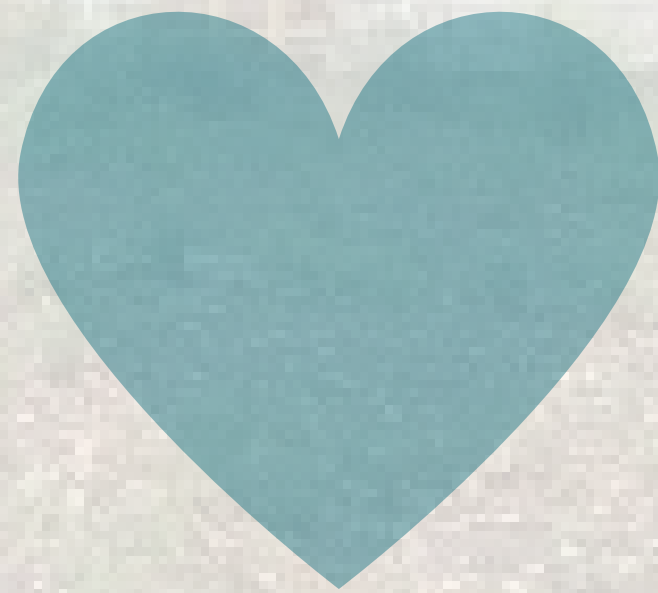




Photo of students outside a Rosenwald school in the 1920's Manchester, TN

Image courtesy of TN State Library and Archives

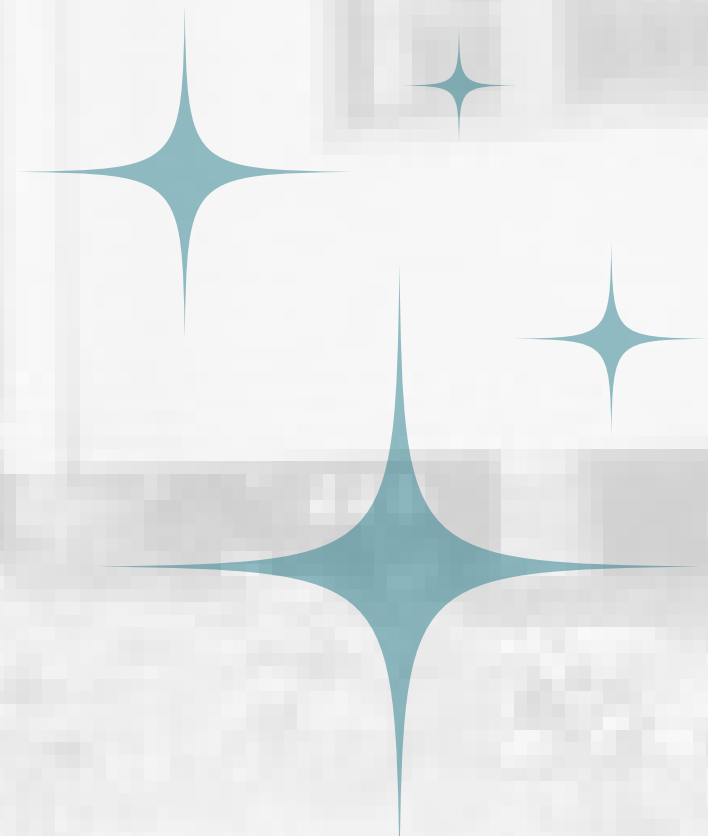
# P r e s e r v a t i o n



LOVE



PROTECT



RESTORE



**AFTER**

**Why do YOU think it is important to preserve our local history?**

**Why do YOU think preservation is important?**

**Is there a building that holds special memories to you?**